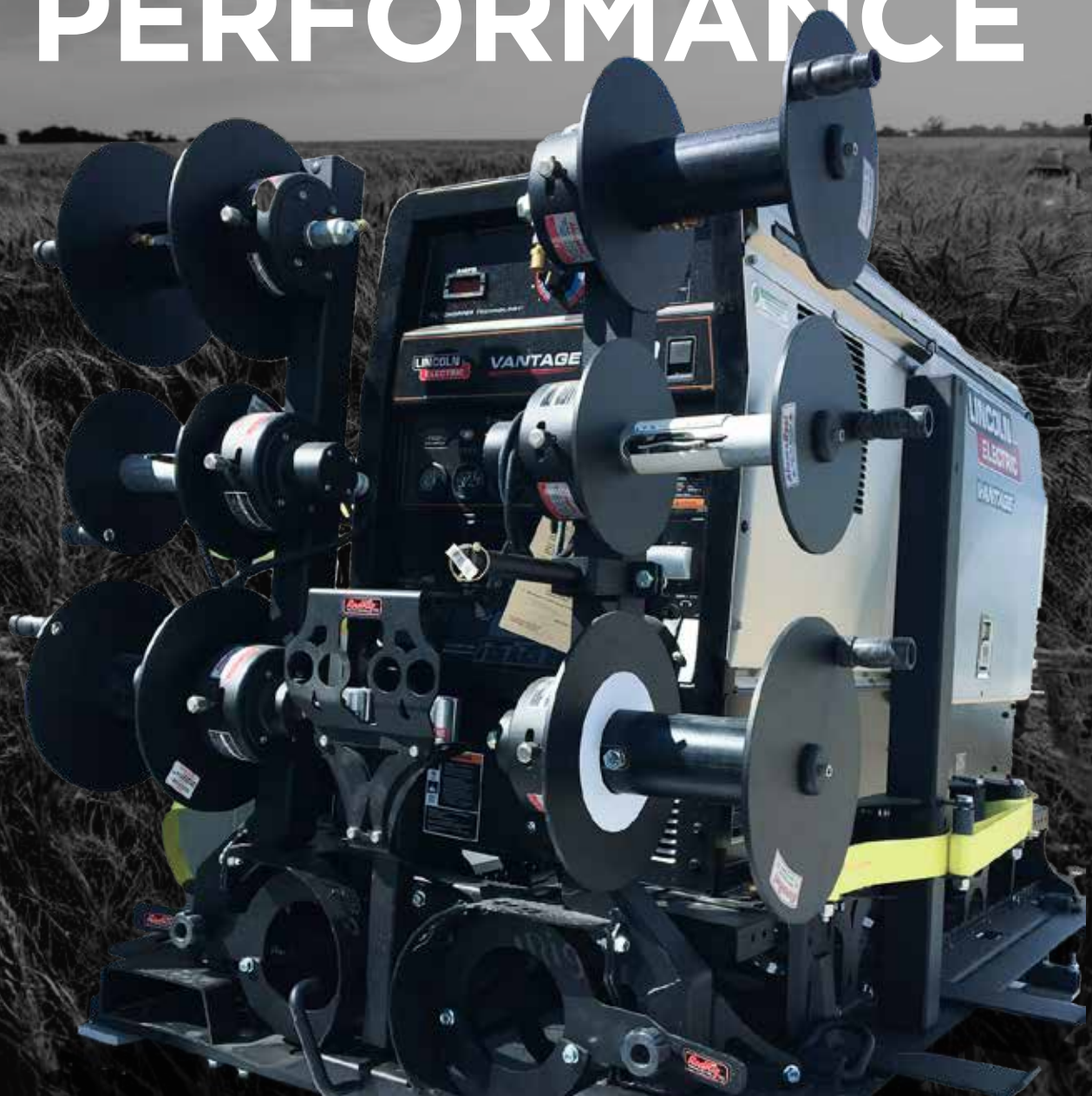


AlumaReel[®]

Revolutionize Your
WELDING
PERFORMANCE



Skids

4282 Series Skid

Weight

- > 500 lbs

Welding Machine Mounting Surface Size

- > 32" Wide x 76" Long

Outside Skid Size

- > 44" Wide x 82" Long x 46" High to top of reel mounting post (52" Wide at bottle level)

Suitable Welders

- > All Lincoln Series
- > All Miller Series

Model: RR-4282



Our skids feature a compact design and are quickly installed and removed with a forklift. Powder coated for a tough, lasting finish. Tool cabinets and custom add-ons available. Built in 4 sizes and compatible with the top welders on the market.

i Verify your welders dimensions to insure it fits within the 'Welding Machine Mounting Surface Size'

4720 Series Skid

Weight

- > 620 lbs (roller installed)
- > 500 lbs (without roller)

Rollout Length

- > 32" rollout
- > spring loaded locking mechanism every 6"

Welding Machine Mounting Surface Size

- > 30" Wide x 61" Long

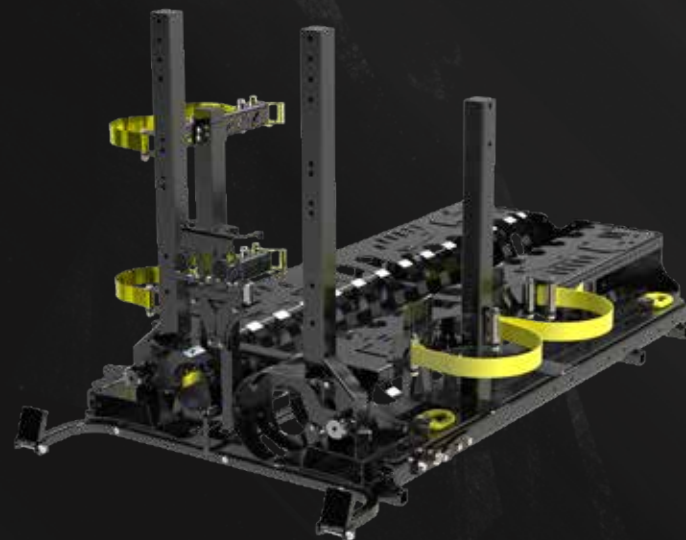
Outside Skid Size

- > 44" Wide x 75" Long x 48" High to top of reel mounting post (53" Wide at bottle level)

Suitable Welders

- > Miller Big Blue 400 & 450
- > Lincoln Vantage 322
- > Lincoln Frontier's
- > Lincoln Cross Country
- > Lincoln Dual Maverick
- > Lincoln SAE-300mp

Model: RR-4720



AlumaReel

alumareel.ca

3600 Series Skid

Weight

- > 500 lbs (roller installed)
- > 400 lbs (without roller)

Rollout Length

- > 32" rollout
- > spring loaded locking mechanism every 6"

Welding Machine Mounting Surface Size

- > 24" Wide x 53" Long

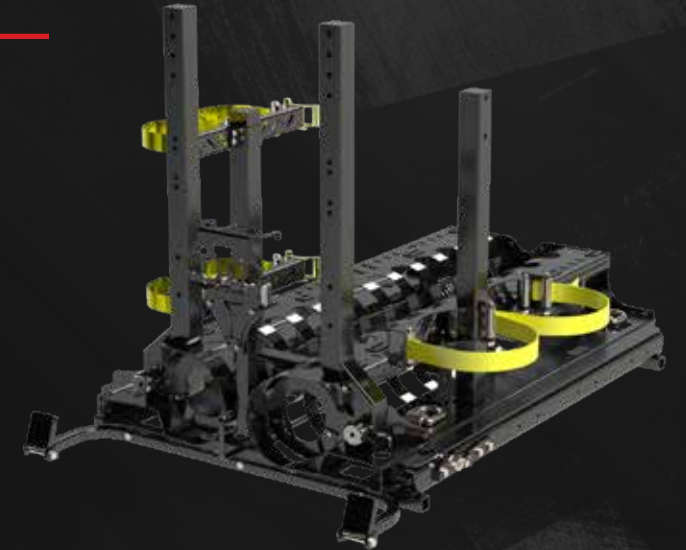
Outside Skid Size

- > 44" Wide x 62" Long x 48" High to top of reel mounting post

Suitable Welders

- > Maverick 325x
- > All Miller TrailBlazer's
- > All Miller BobCat's
- > All Lincoln Ranger Series

Model: RR-3600



2250 Series (Farmer Skid)

Weight

- > 220 lbs (no roller)

Welding Machine Mounting Surface Size

- > 23" Wide x 44" Long

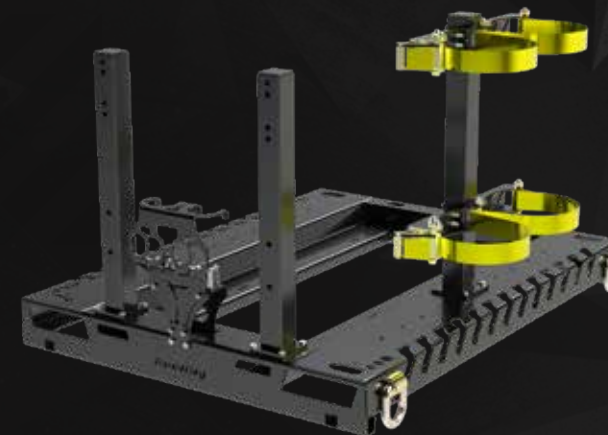
Outside Skid Size

- > 44" Wide x 54" Long x 34" High to top of bottle rack post

Suitable Welders

- > Miller BobCat 230 & 265
- > Lincoln Ranger 225, 250, 305
- > Lincoln Ranger MPX 260 & 330

Model: RR-2250



Skid Mount Rails

(Sold as set of 2)

Features

- > Typically purchased as an extra item to mount skids in multiple vehicles, trailers, or to make mobile shop dolly.
- > These are the rails used to mount all skid systems into or on to whatever application of your choice.
- > These rails are permanently bolted down and contain the spring-loaded quick-release pins used for attaching and removing skids.

Specifications

- > Weight: 90 lbs.

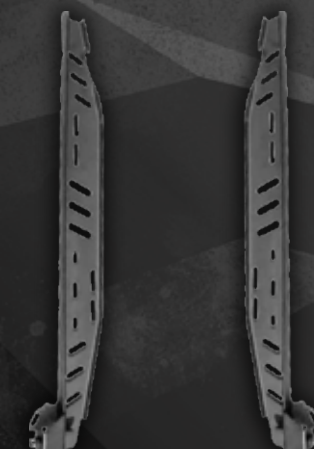
Dimensions

- > 56" x 12" x 4"

Finish

Black Sandtex Coated

Model: TMK-3467



AlumaReel

alumareel.ca

Welding Reels

Welding Cord Reel

Features

- › 500 amp rating, QAI & UL
- › Easy cable hook up
- › Durable powder coat finish
- › Aluminum construction
- › Light weight
- › No rustable parts
- › Ball bearings used on all rotating parts
- › Easy and smooth hand crank
- › Holds approx 125 feet 2/0 cable,
- › 150 feet of 1/0 when used with Kupferlock Theft Control

- › Bolts provided for cable connections
- › Certified Nylon Isolation

Finish Options

- › Clear Coated Polished Aluminum
- › Black Sandtex Coated

Dimensions

- › 17L x 12H x 12W x 22lbs empty

Model: WCR-100



Oxy/Acetylene Reel

Features

- › Capacity 100 feet to 1/4 inch hose
- › All fittings provided for easy hose hook up
- › Important dual hose entry for safe gas distribution
- › Continuous flow design

Finish Options

- › Clear Coated Polished Aluminum
- › Black Sandtex Coated

Dimensions

- › 17L x 12H x 12W x 22lbs empty

Model: 2HR-100



6 Wire Electric Reel

Features

- › For electrical cord use or remote control
- › 14 gauge internal wiring
- › Continuous electric connections in both winding and unwinding
- › Less than 1 milliohm resistance
- › Maintenance free slip rings
- › Contacts designed for zero wear
- › Easy wire hook up
- › Hold 100 to 125 feet wire depending on cable size
- › Up to 30 amp load capacity

- › Remotes Available

Finish Options

- › Clear Coated Polished Aluminum
- › Black Sandtex Coated

Dimensions

- › 17L x 9H x 9W x 19lbs empty

Model: EC6-100



3 Wire Electric Reel

Features

- › For electrical cord use
- › 14 gauge internal wiring
- › Continuous electric connections in both winding and unwinding
- › Less than 1 milliohm resistance
- › Maintenance free slip rings
- › Contacts designed for zero wear
- › Easy wire hook up
- › Holds 100 to 150 feet wire depending on cable size

- › Up to 30 amp load capacity

Finish Options

- › Clear Coated Polished Aluminum
- › Black Sandtex Coated

Dimensions

- › 17L x 9H x 9W x 19lbs empty

Model: EC3-100



Propane Reel

Features

- › 10" standard disc with 1/4" fitting hose (100 ft capacity)
- › 12" disc with 3/8" fitting hose reel (100 ft capacity)
- › Easy hose connect design
- › Solid aluminum construction
- › Vapor or liquid application

Finish Options

- › Clear Coated Polished Aluminum
- › Black Sandtex Coated

Dimensions

- › 17L x 10H x 10W x 19lbs empty

Model: 1HR-100



Inert Gas Welding Reel

Features

- › 10" standard disc with 1/4" fitting hose (100 ft capacity)
- › Easy hose connect design
- › Solid aluminum construction

Finish Options

- › Clear Coated Polished Aluminum
- › Black Sandtex Coated

Dimensions

- › 17L x 10H x 10W x 19lbs empty

Model: 1HR-Shield



Air Reel

Features

- › 3/8", 1/2" and 3/4". (Please specify when ordering)
- › Easy hose connection design.
- › Standard disc size is 12". Other sizes available are 9" and 10".
- › National pipe thread on all reels.

Finish Options

- › Clear Coated Polished Aluminum
- › Black Sandtex Coated

Dimensions

- › 17L x 12H x 12W x 22lbs empty

Model: AIR-100



Water/Steam Reel

Features

- › 3/8 High pressure
- › Direct hand crank rewind
- › Easy hose connect design
- › Solid aluminum construction

Finish Options

- › Clear Coated Polished Aluminum
- › Black Sandtex Coated

Dimensions

- › 17L x 12H x 12W x 22lbs empty

Model: WHR-100



Kupferlock Theft Control

(Sold as set of 2)

Lock it up!

Features

- › Protect your welding cables!
- › Save on expensive copper and down time
- › Padlocks included

Dimensions

- › 12L x 14H x 14W

We have designed and moulded a durable shield that fits snugly around all the 12" Alumareel® disc size reels.

Model: RSL

Tool Boxes

- › Aluminum door and stainless steel hinge reduces box weight and protects against corrosion
- › Rain gutter and double full weather seal keeps moisture out of box and your equipment
- › Convenient attachment point secures materials and tools in pickup bed

- › Drill resistant lock core and three-point latching system resists break-ins
- › Recessed lid creates a negative wind shear effect on door seal to assure weather tightness
- › Double locking weather tight whale-tail T-handle compression lock.
- › Standard double gas springs on all lids

32 Full Tool Box

(Sold as set of 2)

Features

- › Door opening 19 in high, 32 in wide

Approx. Cu. ft. Per Unit

- › 10.6

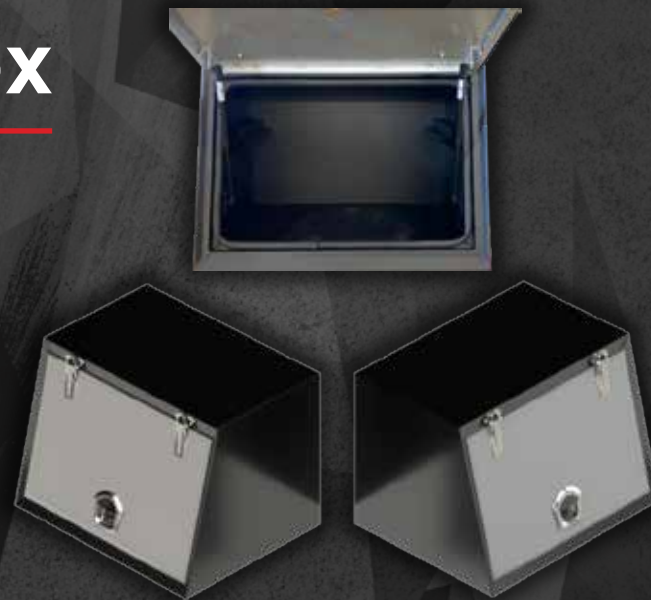
Weight

- › 200lbs.

Dimensions

- › 25"D x 23"H x 33"W

Model: 32 Full Tool Box



AlumaReel tool boxes can be custom configured for your specific needs. As with all of our products, only the highest quality of materials are used in the construction of these tool boxes. Built for your needs, and built to last, these boxes will stand the test of time and provide convenience and security for your mobile workshop.



48 L Shaped Tool Box

(Sold as set of 2)

Features

- › Door opening 19 in high, 45 in wide

Approx. Cu. ft. Per Unit

- › 15

Weight

- › 300lbs.

Dimensions

- › 25"D x 23"H x 49"W

Model: 48 L Shaped Tool Box



48 Full Tool Box

(Sold as set of 2)

Features

- › Door opening 19 in high, 45 in wide

Approx. Cu. ft. Per Unit

- › 20

Weight

- › 300lbs.

Dimensions

- › 25"D x 23"H x 49"W

Model: 48 Full Tool Box



Our tool boxes can be mounted directly to our Skids



Eliminating the need to drill additional holes in your truck bed

60 L Shaped Tool Box

(Sold as set of 2)

Weight

- › Door opening 19 in high, 56 in wide

Approx. Cu. ft. Per Unit

- › 20

Weight

- › 400lbs.

Dimensions

- › 25"D x 23"H x 60"W

Model: 60 L Shaped Tool Box



Tool Box Mount

Features

- › Bracket assembly necessary to attach Tool Boxes to 3600 Skid & 4720 Skid.

Model: TBXSPRT-3467



Reel Posts

1 Reel Mounting Post

- Features**
- › 13" High
 - › 4x4x1/2 Base Plt
 - › (4) 3/8" mounting holes with bolts
 - › 12 lbs ea
 - › Sandtax Black powder coat

Reel NOT included.

Model: RP-10SRT



2 Reel Mounting Post

- Features**
- › 27" High
 - › 4x4x1/2 Base Plt
 - › (4) 3/8" mounting holes with bolts
 - › 14 lbs ea
 - › Sandtax Black powder coat
 - › Reels NOT included.

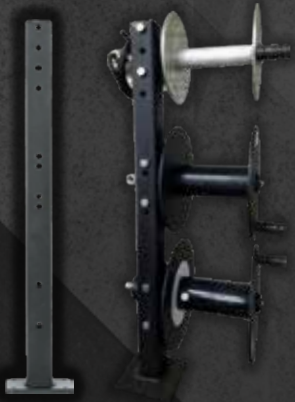
Model: RP-24SRT



3 Reel Mounting Post

- Features**
- › 41" High
 - › 4x4x1/2 Base Plt
 - › (4) 3/8" mounting holes with bolts
 - › 16 lbs ea
 - › Sandtax Black powder coat
 - › Reels NOT included.

Model: RP-36SRT



Remotes

- › Quick-connect amphenol cable coupling system. Rated minimum 2000 couplings
- › 4 Powerful rare-earth magnets for easy workpiece mounting
- › Standard 100 Ft (30m) 16/6 SOOW cable
- › Protective covers provided on connector and receptacles to protect from contaminants
- › Certified to SCC standards C22.2 No.14 - industrial control equipment quality auditing

Lincoln Potentiometer

- › Quick-connect amphenol cable coupling system. Rated minimum 2000 couplings
- › 4 Powerful rare-earth magnets for easy workpiece mounting
- › Standard 100 Ft (30m) 16/6 SOOW cable
- › Protective covers provided on connector and receptacles to protect from contaminants
- › Certified to SCC standards C22.2 No.14 - industrial control equipment
- › All remotes come standard with (4) 110v receptacles

Model: L100P



Miller Potentiometer

- › Quick-connect amphenol cable coupling system. Rated minimum 2000 couplings
- › 4 Powerful rare-earth magnets for easy workpiece mounting
- › Standard 100 Ft (30m) 16/6 SOOW cable
- › Protective covers provided on connector and receptacles to protect from contaminants
- › Certified to SCC standards C22.2 No.14 - industrial control equipment
- › All remotes come standard with (4) 110v receptacles

Model: M100P



Lincoln Rheostat

- › Quick-connect amphenol cable coupling system. Rated minimum 2000 couplings
- › 4 Powerful rare-earth magnets for easy workpiece mounting
- › Standard 100 Ft (30m) 16/6 SOOW cable
- › Protective covers provided on connector and receptacles to protect from contaminants
- › Certified to SCC standards C22.2 No.14 - industrial control equipment
- › All remotes come standard with (4) 110v receptacles

Model: L100R



Gauges

- › Fully enclosed, highly visible modular gauges for more clarity with robust metal gauge guard
- › Extra large 2 ½ in. (63.5 mm) delivery gauge and stainless steel diaphragm
- › Robust seat gives optimum performance
- › Consistent pressure and flow delivery
- › High resistance to oxygen related fires and SLAM knob absorbs impact in the event of a cylinder fall

Victor Inert/Shielding Gauge

- Features**
- › Single Gauge mount can be attached to skid on the side, or on any square post depending on the fit
 - › Designed to work with #GP1200 Victor Single Gauge Post

Model: Inert/Shield-PK-1200



Victor Propane Gauge

- Features**
- › Single Gauge mount can be attached to skid on the side, or on any square post depending on the fit
 - › Designed to work with #GP1200 Victor Single Gauge Post

Model: Propane-PK-1200



Oxygen & Acetylene Gauge Package

- Features**
- › Designed to work with #GP1400 Victor Double Gauge Post

Model: OX-PK-1400



alumareel.ca

Gauge Posts

With their sturdy construction and practical design, our gauge posts ensure accurate levels for your welding tanks. These dependable posts, crafted from durable metal, provide a stable and secure post for gauges, allowing welders to assess their tanks levels with confidence.

Victor Single Gauge Post For Propane Gauge

- › Designed to work with #Propane-PK-1200 Gauge

Regulator NOT Included

Model: GP1200-Propane



Victor Single Gauge Post For Inert/Shielding

- › Designed to work with #Inert/Shielding-PK-1200 Gauge

Regulator NOT Included

Model: GP1200-Inert/Shielding



Victor Double Gauge Post & Shield

- › Designed to work with #OX-PK-1400 Victor Oxy & Acetylene Gauges

Regulators NOT Included

Model: GP1400



alumareel.ca

AlumaReel



Try Our Online 3D Welding Rig Configurator



AlumaReel®

AlumaReel® creates and offers innovative welding products for various industries, including business, commercial, and specialized mobile welding. We have a complete range of mobile welding solutions and are known for our fast and efficient rig set-ups. Our reels and metal services are of the highest quality, setting a standard of excellence in the welding industry.

alumareel.ca
info@alumareel.ca
1.204.836.7348

Designed by Profuzion Studio